

Mobile Series 2 – A new form factor



Specifications

Dimensions	50 x 155 mm (2" x 6.1")
Weight	400 g (0.88 lbs)
Resolution	5MP camera, 6.9 μm pixel size
Field of View	16.9 mm x 14.1 mm (0.66" x 0.56")
Z Sensitivity	< 1 μm
Capture Speed	100 ms
3D data speed	Available in seconds
Interface	USB-C to Windows 10 tablet or laptop



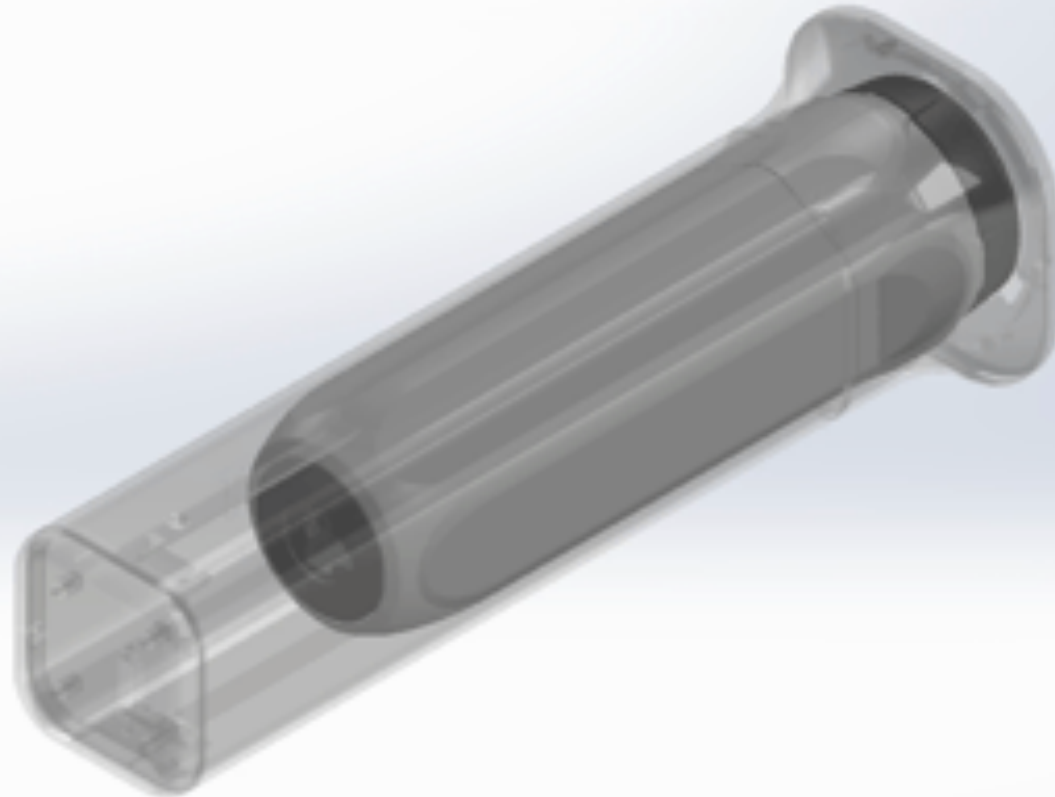
Mobile Series 2 – More value for the customer



- Significant increase of use cases
- Faster return on investment
- Suitable for complex shapes
- Lighter for shop floor and MRO applications
- GSMobile 2.2 Compatible Series 1 and Series 2

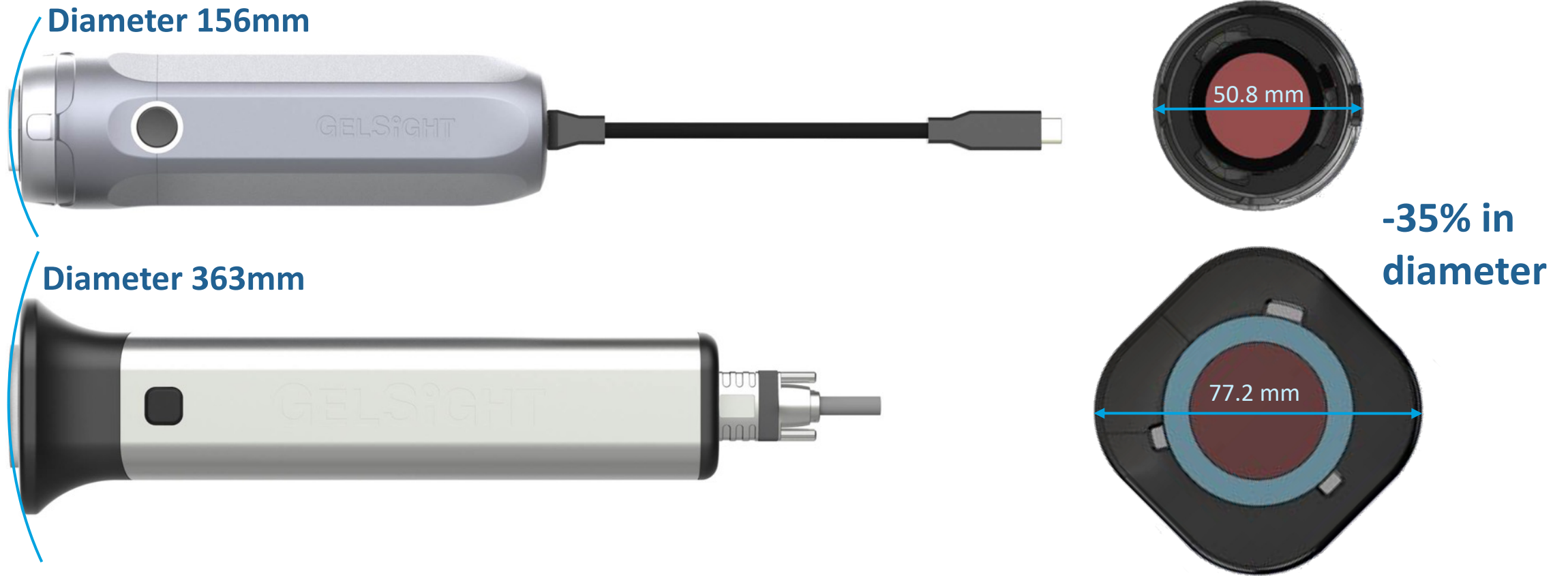


43% smaller in volume, 33% lighter

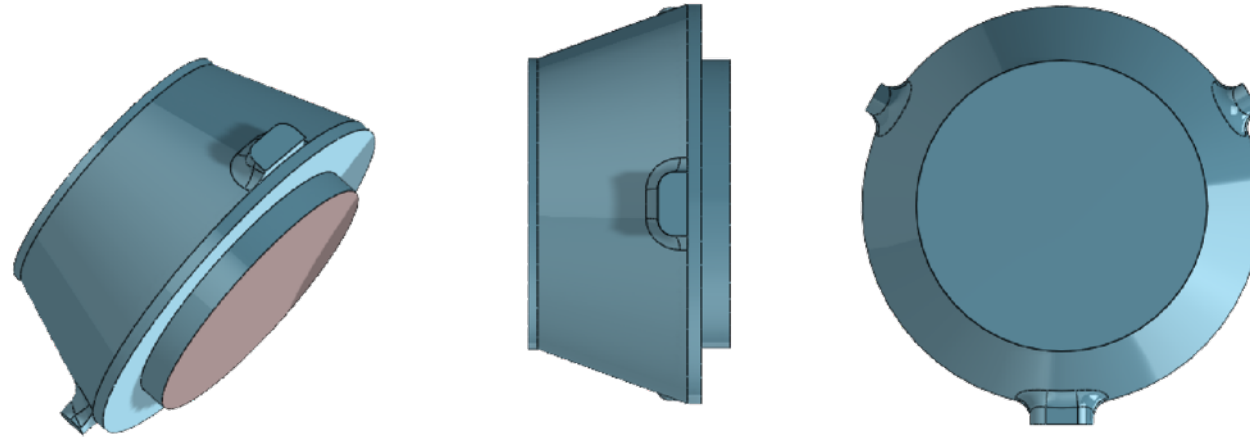


Compacity of the probe head

A better access to concave shapes

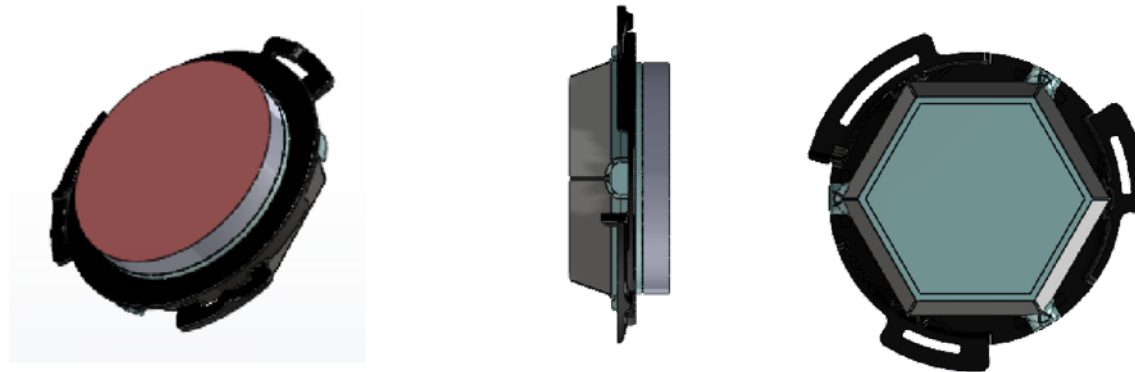


A more compact gel cartridge



Gel diameter: 25.4 mm

Gel Thickness: 3.18 mm



Product FAQs

Question	Answer
Is the Series 1 compatible with GSMobile 2.2?	Yes, both Series 1 and Series 2 use GSMobile 2.2
Is the Series 2 compatible with GSMobile 2.1?	No, Series 2 needs GSMobile 2.2
What is the performance of Series 2?	At least as good as Series 1
Are there any new features or tools with the new probe?	GSMobile 2.2 will provide an updated Pit Detection tool (compatible with Series 1 and Series 2 probes) and will allow the camera focus controls for Series 2
What is the Series 2 field of view?	Exactly like Series 1: 17 x 14 mm
Does Series 2 provide different magnifications?	No, only a 0.5X magnification is available.
What about 1.0X magnification?	1.0X Series 1 will continue to exist
Can I use Series 1 gel cartridge in Series 2 probe?	No, the cartridges are totally different.
What will be the different gel qualities for Series 2?	Like for the Series 1, there will be 2 grades of gel: <ul style="list-style-type: none">- Non-Low friction Thermo Plastic Elastomer- Low friction Thermo Plastic Elastomer



Product FAQs

Question	Answer
Can I already promote Series 2?	Yes
Can I quote Series 2?	Yes
What Series 2 will be available?	October 12 + 6 weeks
When will I receive marketing material?	Product sheet will be available on October 12
Will Series 2 receive the CE and UL certification?	Series 2 will receive CE, UL, FCC certification.
Can I trade in my Series 1?	If customers purchased and received a device in the last 3-months, customers are eligible for a 25% upgrade discount. Speak to our team directly if your customer is interested in pursuing an upgrade.

