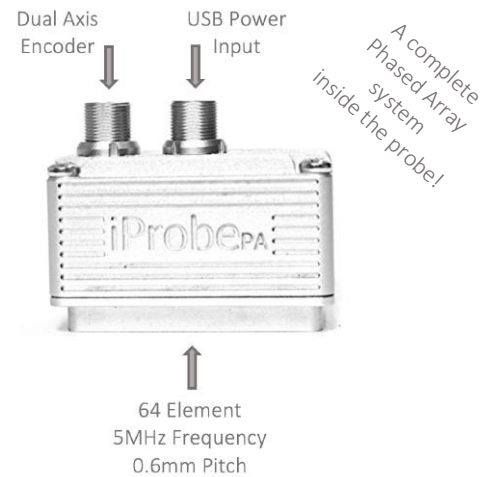
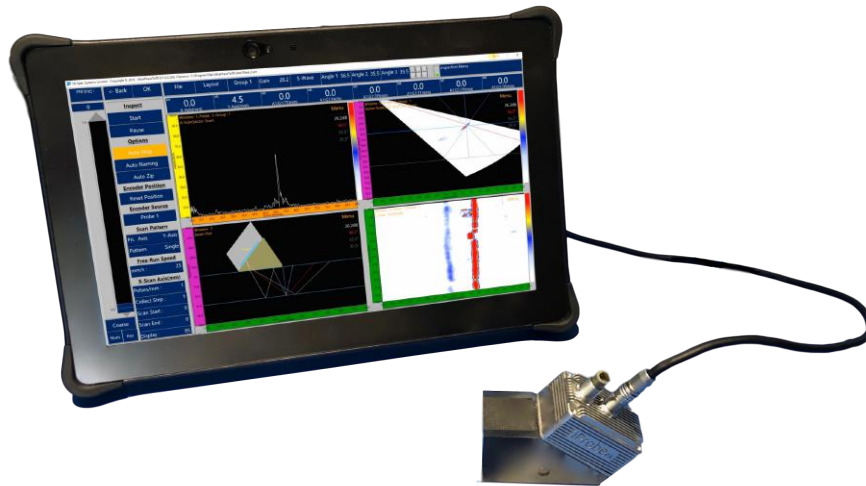




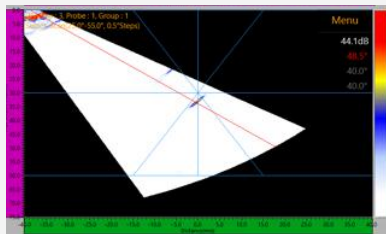
Complete 64 Channel Phased Array System Inside a Probe Powered via USB

32:64PR Phased Array System | Unique System and Probe in One | Dual Axis Encoder



Features

Entry Level Phased Array



- 32:64PR Phased Array System
- Probe Powered via USB
- Standard Probe: 64 element, 5MHz, 0.6mm
- Dual Axis Encoder Onboard Probe
- Changeable Probe Cable
- UltraView Inspection Software
- Weld Inspection and Corrosion Mapping

A Powerful Phased Array System



- Unique System and Probe in One
- Portable and Lightweight Tablet (Only 1.2kg)
- 11" HD Sunlight Readable Screen
- Kickstand, Hand Strap and HD Camera
- Onboard Analysis and Reporting
- Onboard Focal Law Calculator and Beam Plot
- Multi-Group Capability

Advanced Inspections



- 64 Element Phased Array Probe
- Rugged 11" Tablet with UltraView Software
- 55 Degree Wedge for Weld Inspection
- Zero Degree Wedge for Corrosion Mapping
- 2m iProbe to USB Cable
- Onboard Microsoft® Office for Reporting
- Onboard TeamViewer® for Remote Access



www.hispecsystems.com



+44 (0) 1270 842 842

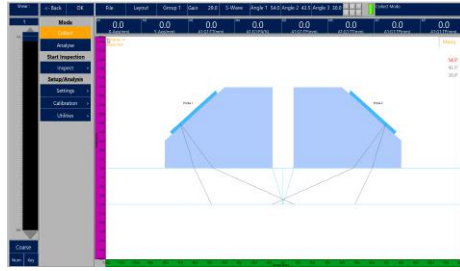


sales@hispecsystems.com

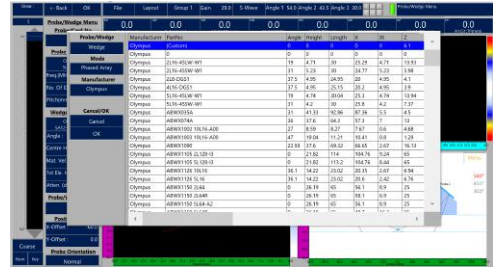
Software

Set Up

- Easy To Use Touch Operated Software
- Probe and Wedge Catalogue
- Weld Overlay and Scan Plan Builder
- Beam Ray Tracing Utility
- Code Compliant Calibration
- Multiple Window Layouts
- Up to 8x Ultrasonic Groups
- Group Copy and Mirror Option



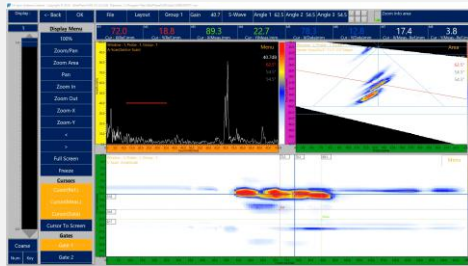
Scan Plan



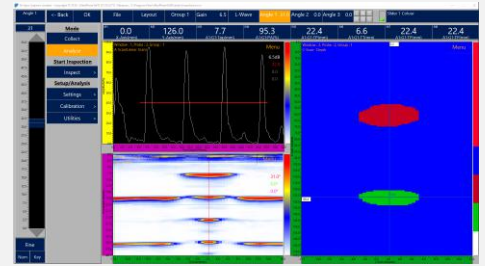
Probe and Wedge Catalogue

Inspection

- Manual, One Line and Raster Scanning
- Multiple Encoder Modes
- Amplitude or Depth C Scan
- Unlimited Scan File Size
- Store Scans on Hard Disk (128GB)
- Store Scans on External Hard Drive
- Up to 8kHz PRF
- 100V Phased Array



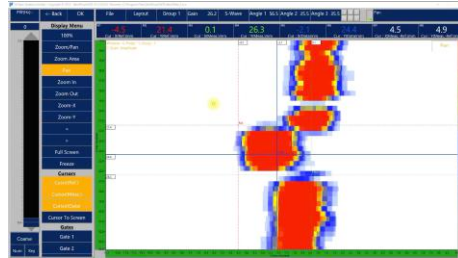
Phased Array Inspection



Corrosion Mapping Inspections

Analysis

- Onboard Analysis and Reporting
- Defect Sizing
- Defect Mark Up Table
- Advanced Analysis Features
- Multi-Group Analysis
- Depth or Amplitude C Scan
- Store All Raw A Scan Files
- Analysis Mode With Keyboard & Mouse



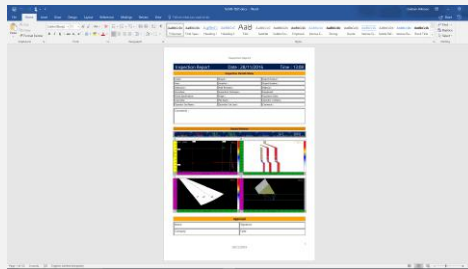
Defect Sizing



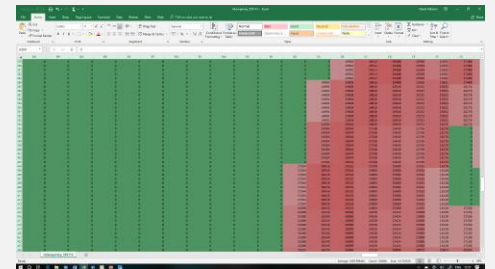
Depth or Amplitude C Scan

Reporting

- Onboard Microsoft Word Reporting
- Report Includes Every Set Up Parameter
- Export Data to Excel
- Configurable Report With User Details
- Save C Scan as JPEG
- No Other PC Software Required
- Save Scans Straight to the Cloud
- Remote Access with TeamViewer



Microsoft Word Reporting



Microsoft Excel Exporting

Specifications

Inspection Kit Available



Included:

1. iProbe 32:64 (64 Element 5MHz 0.6 pitch)
2. Rugged 11" Inspection Tablet
3. UltraView Inspection Software
4. 55 Degree iProbe Wedge
5. 0 Degree iProbe Wedge
6. 2m iProbe to Tablet Cable
7. Bluetooth Mouse and Keyboard
8. Calibration Certificates

System Specification

General	
Size (W x D x H)	298mm x 192mm x 20mm
Weight	Tablet - 1.2kg
Display	11 inch, 1920 x 1080 HD Sunlight-readable & multi-touch screen
Battery	Li-Ion battery pack 6 hours run time with swappable battery
Durability	
Features	Rugged P65 certified All-weather design
CPU	
Processor	Intel Core i5
Storage & Memory	
RAM	8GB RAM
SSD	128GB
SD	SD Card Input
Wireless	
Wi-Fi	Intel Dual Band Wireless-A 8260
Bluetooth	v4.1 Classic mode
4G LTE	SIM Card Input
Interface	
USB	USB 3.0 x2
LAN	Input x1
Headphones/Speaker	Mini-jack stereo
Accessories	
Stand	Carrying Handle & Kickstand
Additional Battery	Additional Battery Optional Extra
Keyboard and Mouse	Wireless Keyboard and Mouse
Software	
Package	Full UltraView data collection and data analysis software pre-installed
Encoders	
Type	Quadrature
Number of Axis	2x Axis
Inspection Codes	
Compliant	EN 12668
CE Mark	European Standards
Environmental	
IP Rating	Designed to IP65
Temperature	-20°C to 60°C
Humidity	100%

Phased Array Specification

General	
Model	iProbe _{PA} 32:64
Size (W x D x H)	50mm x 31mm x 32mm
Weight	0.09kg
Connectors	USB Interface – Lemo 0B 4 way Dual Axis Encoder – Lemo 00 4 way
Number of Focal Laws	1024 per probe
Probe Recognition	Automatic
Frequency/Pitch	
Frequency Options	5MHz (Standard)
Pitch Options	0.6mm (Standard)
Aperture/Elements	
Aperture	32 Elements
Number of Elements	64 Elements
Pulser	
Voltage	100 V
Pulse Width	30 ns to 500 ns, resolution 2.5 ns
Pulse Shape	Square Wave
Output Impedance	Less than 10 Ω
Receiver	
Gain	0 dB to 80 dB
Input Impedance	50 Ω / 200 Ω
System Bandwidth	0.5 MHz to 25 MHz
Beamforming	
Scan Type	Sectorial and Linear
Group Quantity	Multi
Active Elements	32 Elements
Elements	64 Elements
Data Acquisition	
Digitizing Frequency	100 MHz (12 bits)
Maximum Pulsing Rate (PRF)	Up to 8 kHz
Data Processing	
Number of Data Points	8192
Real-time Averaging	2, 4, 8, 16, 32, 64
Rectifier	RF, Full Wave, Halfwave +, Halfwave -
Filtering	Low-pass (adjusted to probe frequency, digital filtering (bandwidth, frequency range)
Video Filtering	Smoothing (adjusted to probe frequency range)
Data Visualisation	
A-scan Refresh Rate	Real Time: 40Hz
Data Synchronisation	
On Internal Clock	1 Hz to 10 kHz
On Encoder	On 1 or 2 axes
Programmable Time-Corrected Gain (TCG)	
Number of Points	16