

## Ultrasonic transducers, probes, accessories & NDT equipment



GB Inspection Systems Limited is a leading UK manufacturer and designer of ultrasonic probes and accessories. We supply NDT equipment and consumables and provide a repair and calibration service covering most types of NDT equipment.

Established over 25 years and with an established worldwide customer base from a wide range of industries which include - Power Generation, Gas, Oil, Mining, Nuclear, Military, Railway, Metals, Insurance, Validation, Aerospace and General Industry.

We know we can help you with your NDT requirements. We also offer custom made probes. Please contact us.

### Single crystal compression



Probe type	f (MHz)	D (mm)	Aansluiting	Afmeting
SCSF 24-1	1	24	LEMO 1	ST1B
SCSF 24-2	2	24	LEMO 1	ST1B
SCSF 24-4	4	24	LEMO 1	ST1B



Probe type	f (MHz)	D (mm)	Aansluiting	Afmeting
SCSF 10-2	2	10	LEMO 00	ST1A
SCSF 10-4	4	10	LEMO 00	ST1A
SCSF 10-5	5	10	LEMO 00	ST1A



Probe type	f (MHz)	D (mm)	Aansluiting	Afmeting
SCDL 6-5	5	6,4	Microdot	ST6
SCDL 6-10	10	6,4	Microdot	ST7



Probe type	f (MHz)	D (mm)	Aansluiting	Afmeting
SCHF 20-1	1	20	LEMO 00	ST2B
SCHF 20-2	2	20	LEMO 00	ST2B
SCHF 20-4	4	20	LEMO 00	ST2B
SCHF 20-5	5	20	LEMO 00	ST2B
SCHF 10-2	2	10	LEMO 00	ST2A
SCHF 10-4	4	10	LEMO 00	ST2A
SCHF 10-5	5	10	LEMO 00	ST2A
SCHF 10-10	10	10	LEMO 00	ST2A



Probe type	f (MHz)	D (mm)	Aansluiting	Afmeting
SMSC 5-5	5	5	Microdot	ST4A
SMSC 5-10	10	5	Microdot	ST4A



Probe type	f (MHz)	D (mm)	Aansluiting	Afmeting
SCLP 20-2.5	2.5	20	Microdot	ST5
SCLP 20-5	5	20	Microdot	ST6



Probe type	f (MHz)	D (mm)	Aansluiting	Afmeting
SCLP 10-2,5	2.5	10	fest	ST4B
SCLP 10-4	4	10	fest	ST4B
SCLP 10-5	5	10	fest	ST4B



Probe type	f (MHz)	D (mm)	Aansluiting	Afmeting
SC 20-2,5	2.5	20	SUBVIS	ST12C
SC 20-4	4	20	SUBVIS	ST12C
SC 20-5	5	20	SUBVIS	ST12C
SC 10-2,5	2,5	10	SUBVIS	ST12A
SC 10-4	4	10	SUBVIS	ST12A
SC 10-5	5	10	SUBVIS	ST12A

## Twin crystal compression



Probe type	f (MHz)	D (mm)	Aansluiting	Afmeting
TCSF 24-2o	2	24	2 x LEMO 00	ST1B
TCSF 24-4o	4	24	2 x LEMO 00	ST1B



Probe type	f (MHz)	D (mm)	Aansluiting	Afmeting
TCSF 10-2	2	10	2 x LEMO 00	ST3
TCSF 10-4	4	10	2 x LEMO 00	ST3
TCSF 10-5	5	10	2 x LEMO 00	ST3



Probe type	f (MHz)	D (mm)	Aansluiting	Afmeting
TC 20-2o	2	20	2 x SUBVIS	ST12C
TC 20-2,5	2,5	20	2 x SUBVIS	ST12C
TC 20-5	5	20	2 x SUBVIS	ST12C
TC 15-2,5	2,5	15	2 x SUBVIS	ST12B
TC 15-5	5	15	2 x SUBVIS	ST12B
TC 10-2,5	2,5	10	2 x SUBVIS	ST12A
TC 10-4	4	10	2 x SUBVIS	ST12A
TC 10-5	5	10	2 x SUBVIS	ST12A



Probe type	f (MHz)	D (mm)	Aansluiting	Afmeting
MTC 10-5	5	10	fest	ST4B



Probe type	f (MHz)	D (mm)	Aansluiting	Afmeting
SMTC 5-5	5	5	fest	ST4A
SMTC 5-10	10	5	fest	ST4A



Probe type	f (MHz)	D (mm)	Aansluiting	Afmeting
TCE 10-5	5	10	2 x SUVIS	ST7A
TCE 15-5	5	15	2 x SUVIS	ST7B
TCE 20-5	5	20	2 x SUVIS	ST7C
TCE 15-2,5	2,5	15	2 x SUVIS	ST7B
TCE 20-2,5	2,5	20	2 x SUVIS	ST7C

## Angle beam probes



Probe type	f (MHz)	axb (mm)	$\beta$ (grad)	Aansluiting	Afmeting
MWS 35-2	2	8 x 9	35	LEMO 00	ST8A
MWS 45-2	2	8 x 9	45	LEMO 00	ST8A
MWS 60-2	2	8 x 9	60	LEMO 00	ST8A
MWS 70-2	2	8 x 9	70	LEMO 00	ST8A
MWS 80-2	2	8 x 9	80	LEMO 00	ST8A
MWS 90-2	2	8 x 9	90	LEMO 00	ST8A
MWS 35-4	4	8 x 9	35	LEMO 00	ST8A
MWS 45-4	4	8 x 9	45	LEMO 00	ST8A
MWS 60-4	4	8 x 9	60	LEMO 00	ST8A
MWS 70-4	4	8 x 9	70	LEMO 00	ST8A
MWS 80-4	4	8 x 9	80	LEMO 00	ST8A
MWS 90-4	4	8 x 9	90	LEMO 00	ST8A



Probe type	f (MHz)	D (mm)	$\beta$ (grad)	Aansluiting	Afmeting
SS38-2	2	10	38	SUBVIS	ST9
SS45-2	2	10	45	SUBVIS	ST9
SS60-2	2	10	60	SUBVIS	ST9
SS70-2	2	10	70	SUBVIS	ST9
SS38-4	4	10	38	SUBVIS	ST9
SS45-4	4	10	45	SUBVIS	ST9
SS60-4	4	10	60	SUBVIS	ST9
SS70-4	4	10	70	SUBVIS	ST9



Probe type	f (MHz)	D (mm)	$\beta$ (grad)	Aansluiting	Afmeting
SS38-2HP	2	10	38	SUBVIS	ST9
SS45-2HP	2	10	45	SUBVIS	ST9
SS60-2HP	2	10	60	SUBVIS	ST9
SS70-2HP	2	10	70	SUBVIS	ST9
SS80-2HP	2	10	80	SUBVIS	ST9
SS90-2HP	2	10	90	SUBVIS	ST9
SS38-4HP	4	10	38	SUBVIS	ST9
SS45-4HP	4	10	45	SUBVIS	ST9
SS60-4HP	4	10	60	SUBVIS	ST9

SS70-4HP	4	10	70	SUBVIS	ST9
SS80-4HP	4	10	80	SUBVIS	ST9
SS90-4HP	4	10	90	SUBVIS	ST9



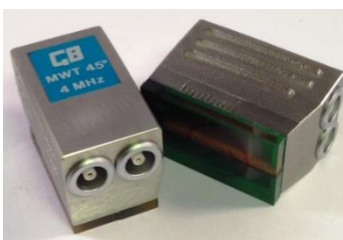
Probe type	f (MHz)	axb (mm)	$\beta$ (grad)	Aansluiting	Afmeting
XLSS38-2	2	20 x 20	38	LEMO 1	ST8C
XLSS45-2	2	20 x 20	45	LEMO 1	ST8C
XLSS60-2	2	20 x 20	60	LEMO 1	ST8C
XLSS70-2	2	20 x 20	70	LEMO 1	ST8C
XLSS38-4	4	20 x 20	38	LEMO 1	ST8C
XLSS45-4	4	20 x 20	45	LEMO 1	ST8C
XLSS60-4	4	20 x 20	60	LEMO 1	ST8C
XLSS70-4	4	20 x 20	70	LEMO 1	ST8C



Probe type	f (MHz)	D (mm)	$\beta$ (grad)	Aansluiting	Afmeting
LSS38-2,5	2,5	15	38	LEMO 00	ST8B
LSS45-2,5	2,5	15	45	LEMO 00	ST8B
LSS60-2,5	2,5	15	60	LEMO 00	ST8B
LSS70-2,5	2,5	15	70	LEMO 00	ST8B



Probe type	f (MHz)	axb (mm)	$\beta$ (grad)	Aansluiting	Afmeting
TS38-4	4	4x9 (2)	38	2 x SUBVIS	ST9
TS45-4	4	4x9 (2)	45	2 x SUBVIS	ST9
TS60-4	4	4x9 (2)	60	2 x SUBVIS	ST9
TS70-4	4	4x9 (2)	70	2 x SUBVIS	ST9



Probe type	f (MHz)	axb (mm)	$\beta$ (grad)	Aansluiting	Afmeting
MWT38-4	4	4x9 (2)	38	2 x SUVIS	ST8A
MWT45-4	4	4x9 (2)	45	2 x SUVIS	ST8A
MWT60-4	4	4x9 (2)	60	2 x SUVIS	ST8A
MWT70-4	4	4x9 (2)	70	2 x SUVIS	ST8A

## Special inspection probes

- Probes for the inspection of slewing rings for transportable rotating lifting cranes.
- Probes for automatic inspection of co extruded tubes.
- Probe for inspection of nuclear plant.
- Probes for Inconel inspection using time of flight method.



Probe type	f (MHz)	D (mm)	$\beta$ (grad)	Aansluiting	Afmeting
MSS 38-5	5	5	38	PC / L / S	ST15
MSS 45-5	5	5	45	PC / L / S	ST15
MSS 60-5	5	5	60	PC / L / S	ST15
MSS 70-5	5	5	70	PC / L / S	ST15



Probe type	f (MHz)	axb (mm)	$\beta$ (grad)	Aansluiting	Afmeting
BTP 70	5	3,5 x 6 (2)	70	INTEGRAL	ST16



Probe type	f (MHz)	axb (mm)	Aansluiting	Afmeting
LCW 2	2	6x25 (2)	PCT / L / ML	ST8C
LCW 4	4	6x25 (2)	PCT / L / ML	ST8C
CW 2	2	6x13 (2)	PCT / L / ML	ST8B
CW 4	4	6x13 (2)	PCT / L / ML	ST8B



Probe type	f (MHz)	D (mm)	Range	Aansluiting	Afmeting
SAC 45	4	10	3-25	PC / L / ML	ST11
SAC 60	4	10	3-20	PC / L / ML	ST11
SAC 70	4	10	2-15	PC / L / ML	ST11



Probe type	f (MHz)	axb (mm)	Aansluiting	Afmeting
LTAC 45	2	10x20 (2)	PCT / L / ML	ST8C
LTAC 60	2	10x20 (2)	PCT / L / ML	ST8C
LTAC 70	2	10x20 (2)	PCT / L / ML	ST8C



Probe type	f (MHz)	axb (mm)	Aansluiting	Afmeting
TAC 45	4	5x10 (2)	PCT / L / ML	ST8B
TAC 60	4	5x10 (2)	PCT / L / ML	ST8B
TAC 70	4	5x10 (2)	PCT / L / ML	ST8B



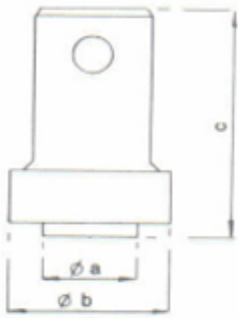
Probe type	f (MHz)	D (mm)	Aansluiting	Afmeting
HSS 45-4	4	10	PC / L / ML	ST9
HSS 60-4	4	10	PC / L / ML	ST9
HSS 70-4	4	10	PC / L / ML	ST9



Probe type	f (MHz)	axb (mm)	Aansluiting	Afmeting
HTC 10-5	5	10	PCT / L / ML	ST12D
HTC 10-2,5	2,5	10	PCT / L / ML	ST12D

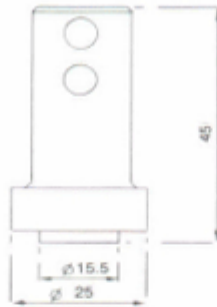


**Afmetingen**

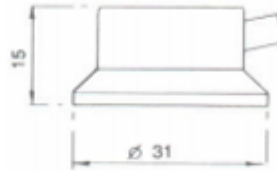


	A	B
a	15.5	28.6
b	25	44
c	37	58

**ST1**



**ST3**



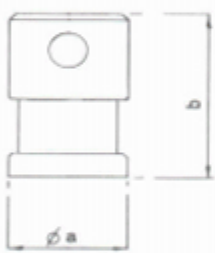
**ST5**



SQUARE

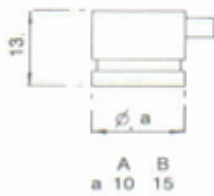
A	B	C
a	19	22.5
	25.4	

**ST7**



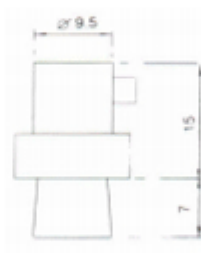
	A	B
a	20	31.5
b	30	30

**ST2**

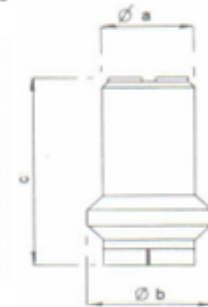


A	B
a	10
	15

**ST4**

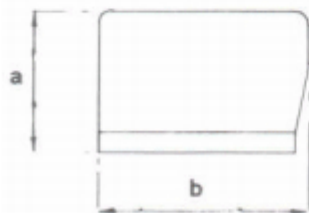


**ST6**



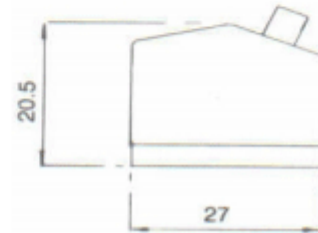
**ST12**

	A	B	C	D
a	18	21	27	18
b	25.4	28.5	33.3	25.4
c	32.5	32.5	32.5	53



**ST8**

	A	B	C
a	21.5	28	34.5
b	29.5	44	54



**ST9**