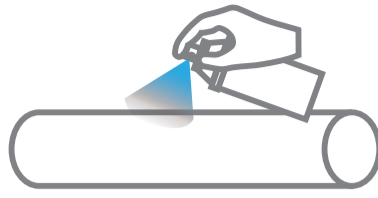


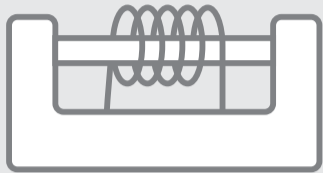
MAGNAFLUX MAGNETIC PARTICLE INSPECTION PROCESS GUIDE



Preclean with Spotcheck SKC-S

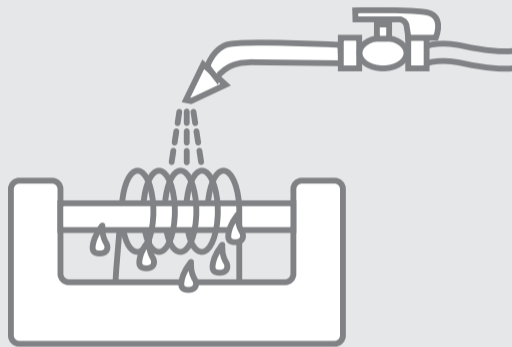


CURRENT/FIELD FLOW – FIXED BENCHES



MAG 20 Series
MAG 40 Series
MAG 50 Series

Mount the part to be tested and select current and/or field flow mode(s)



1. Start the flow of magnetic ink over the part
2. Switch on the current/field flow
3. Stop the flow of magnetic ink over the part
4. Switch off the current/field flow

FIELD FLOW – PORTABLE YOKES AND COILS



Y1 Yoke
Y6 Yoke
Y7 Yoke
Y8 Yoke
YM5 Yoke

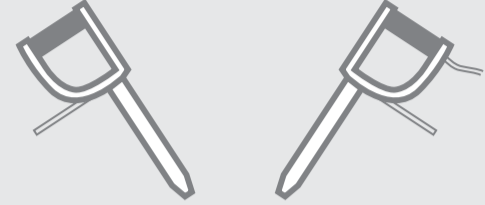


L10 Magnetising Coil
Split Coils

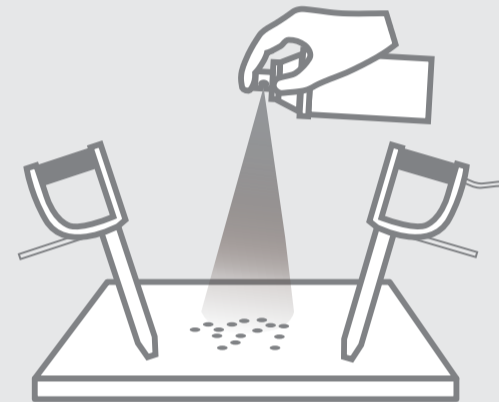


1. Switch on the magnetising field
2. Apply the magnetic powder/ink to the part
3. Switch off the magnetising field

CURRENT FLOW – PORTABLE PRODS



Standard Prod Sets



1. Switch on the current
2. Apply the magnetic powder/ink to the part
3. Switch off the current

FLUORESCENT MPI POWDERS/INKS

Powders
14A
MG 410
MG 601

Ready-to-Use Inks
14HF
410HF

Concentrates
WB-12
MF-655 WB



Oil Vehicle
MG/MX Carrier II



Water Bath Additives
WA-1
WA-2



VISIBLE MPI POWDERS/INKS

Dry Method MPI
1 Grey
8A Red

Ready-to-Use Inks
7HF

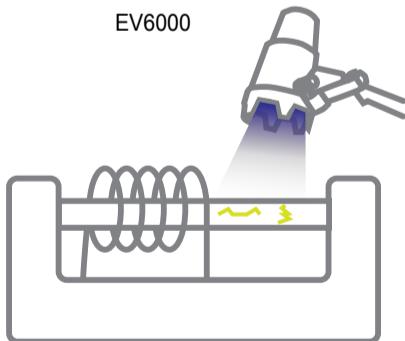
Concentrate
WB-27



White Contrast Paint
WCP-2



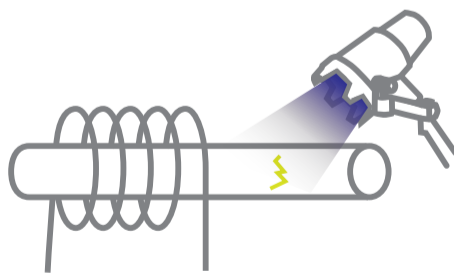
EV6000



Fixed Benches

Inspect
Fluorescent

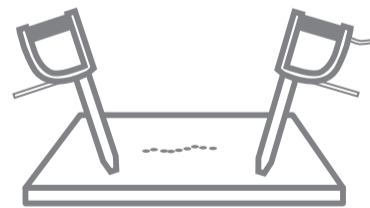
EV6000



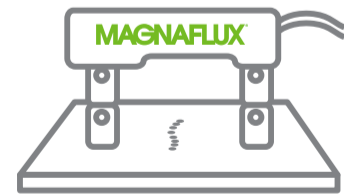
Portable Coils



Inspect
Visible



Portable Prods



Portable Yokes

DEMAGNETISATION



1. Put part in coil
2. Turn on current
3. Draw part through demagnetising unit
4. Check for residual magnetism
5. Remove part from unit
6. Turn off current